

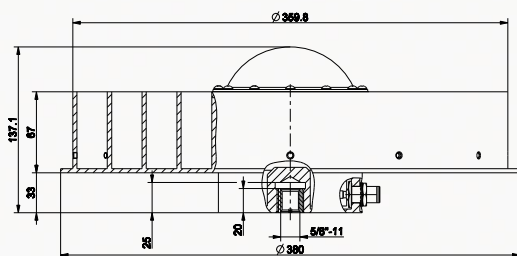
RingAnt-DM

Reference Station antenna with choke ring RingAnt-DM is the standard Dorne-Margolin antenna element mounted on standard JPL Choke Ring. RingAnt-DM can track GPS, GLONASS and Galileo signals.

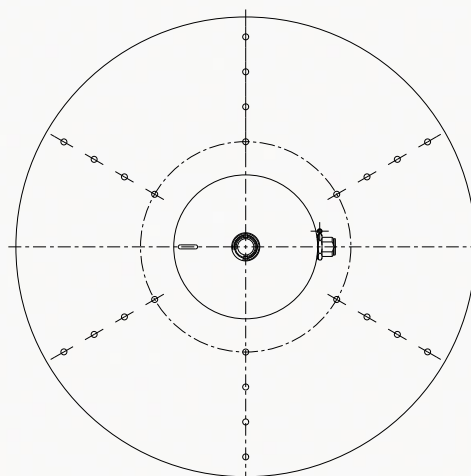
The RingAnt-DM antenna is designed for highly efficient multipath reduction and is recommended for use in GNSS reference networks, infrastructure monitoring, high precision geodetic surveying, or machine control applications.

RINGANT-DM

| Signal | |
|-----------------------|--|
| Capability | L1 GPS/GLONASS/Galileo L2 GPS/GLONASS L5 GPS E5 Galileo E6 Galileo |
| Frequency | 1565~1610 MHz 1165~1300 MHz |
| Electrical | |
| Antenna Gain | 1565~1610 MHz - 6.0 dB typ. 1165~1300 MHz - 5.0 dB typ. |
| Axial Ratio | 3.0 dB max. |
| Output Impedance | 50 Ohm |
| VSWR | 2.0 : 1 |
| LNA gain | 32±2 dB |
| Noise Figure | 1565~1610 MHz - 2.2 dB typ. 1165~1300 MHz - 1.7 dB typ. |
| DC voltage | 3.0~15.0VDC 45mA@5.0V typ. |
| Environmental | |
| Operating Temperature | -45°C ~ +85°C |
| Storage Temperature | -50°C ~ +85°C |
| Humidity | Waterproof |
| Mechanical | |
| Antenna type | Omnidirectional, hemispherical |
| Connector | N-type |
| Weight | 4.4 kg |
| Dimensions | Ø 380 mm; H=138 mm |
| Enclosure | Radome: Fiberglass Base: Aluminum |
| Mounting | 5/8-11 inches mount |



* All dimensions are in mm



Specifications are subject to change without notice.



JAVAD GNSS
www.javad.com

